

# QuickTest XM

## FELINE PROCEDURE FOR MAJOR CROSSMATCH\*

25 min

Material provided:



1 XM Quick Test

≈ 10 µL

≈ 10 µL

2 Blood collector strips



1 blue top buffer 1



1 yellow top buffer 2



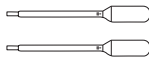
1 Wash Buffer



1 small tube 1,2 ml



1 Empty well



2 pipettes (1 drop ≈ 40 µL)

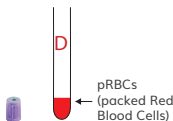
\* For minor XM reverse the blood samples : Minor = Donor Plasma + Recipient RBCs and perform the same procedure

### N°1 : PREPARATION OF BLOOD SAMPLES

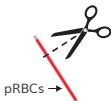
(MAJOR = Donor RBCs + Recipient plasma)

#### Donor

Centrifuge blood tube (5 min at 1000g).  
Discard the plasma to collect pRBCs.



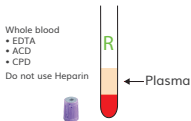
Collect blood from blood bag segment.



OR

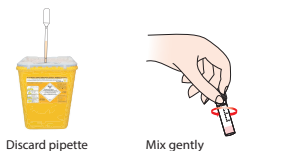
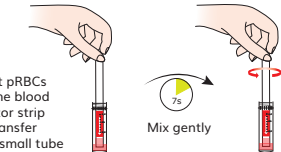
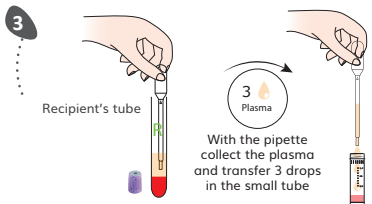
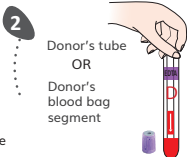
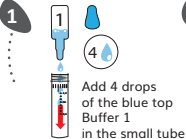
#### Recipient

Centrifuge blood tube (5 min at 1000g)  
in order to collect plasma (1):



(1) or serum if using a dry tube

### N°2 : PREPARATION OF MAJOR XM



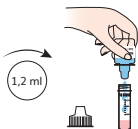


Incubate 10 minutes  
at room temperature

FIRST WASH

1

Fill the tube up to  
1,2 ml of wash  
buffer



2

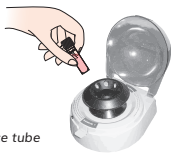
Mix the suspension  
3 times minimum



3

Centrifuge  
2  
min  
at 1000g

Don't forget the balance tube  
(not provided)



4

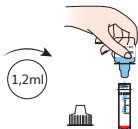
Discard the supernatant only :  
the RBCs pellet must stay at the bottom



SECOND WASH

5

Fill the tube up to  
1,2 ml of wash  
buffer



6

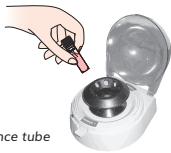
Resuspend completely  
the pellet by mixing  
the suspension  
several times



7

Centrifuge  
2  
min  
at 1000g

Don't forget the balance tube

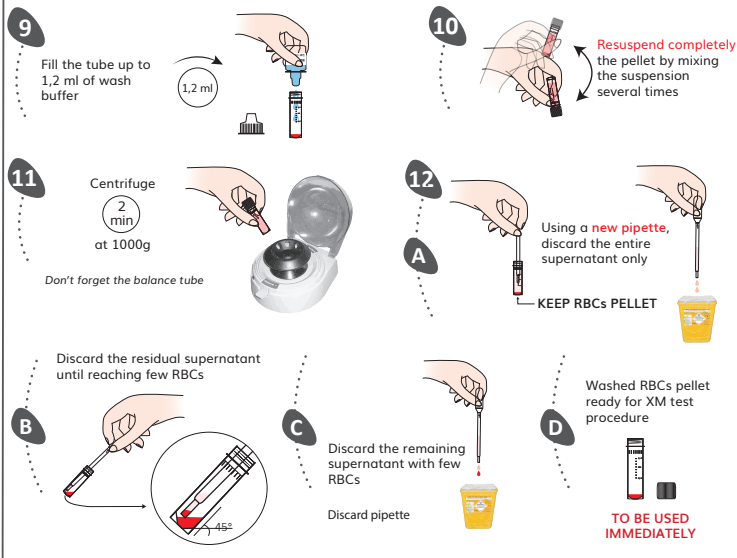


8

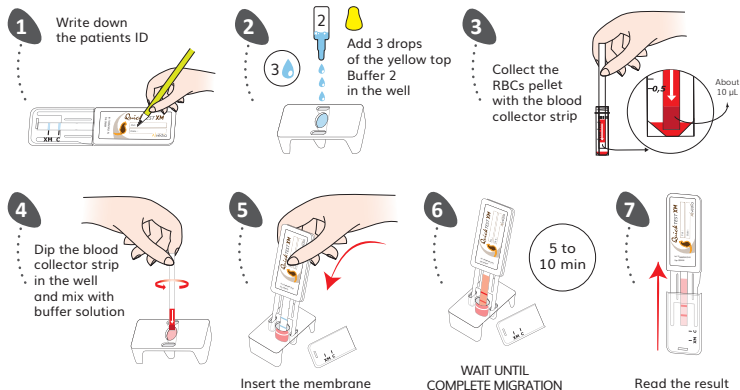
Discard the supernatant only :  
the RBCs pellet must stay at the bottom



### THIRD WASH (PROCEDURE TO AVOID DILUTION BEFORE TESTING)



### N°5 : XM TEST PROCEDURE



# QuickTest XM

## Result Interpretation



**INCOMPATIBLE / DO NOT TRANSFUSE**



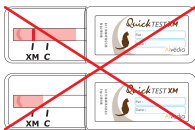
Weak line = positive result



In case of strong allo-antibodies in B cats plasma = positive result

C = Control Line / XM = Antiglobulin Test for detection of Feline CrossMatch

The XM test line will often be weaker than the control line.



In case of any other result, please take a picture and send us an email at : [contact@alvedia.com](mailto:contact@alvedia.com)  
[www.alvedia.com](http://www.alvedia.com)



**COMPATIBLE / SAFE TRANSFUSION**



White line = negative result

### SCIENTIFIC ADVISES

It is **MANDATORY** to blood type the donor and the recipient before making a Feline XM Test.  
Always transfuse **COMPATIBLE** blood.

Be careful, low titer and/or low affinity alloantibodies can be eluted during washing step procedures.  
This can affect the sensitivity of the XM test (e.g. low affinity/titer of anti-B in A blood group cat's plasma).

Usually, these alloantibodies cannot induce severe or mild hemolytic transfusion reaction.

Troubleshooting :  
Please contact the  
Scientific Service Laboratory  
[contact@alvedia.com](mailto:contact@alvedia.com)  
+33(0)478 380 239

**Alvedia**  
Alice Veterinary Diagnostic